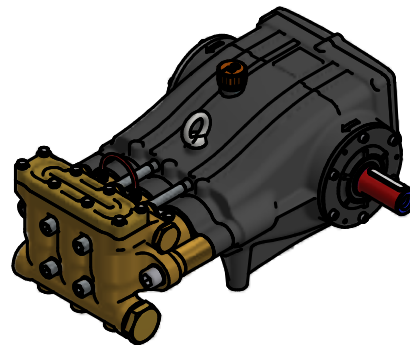
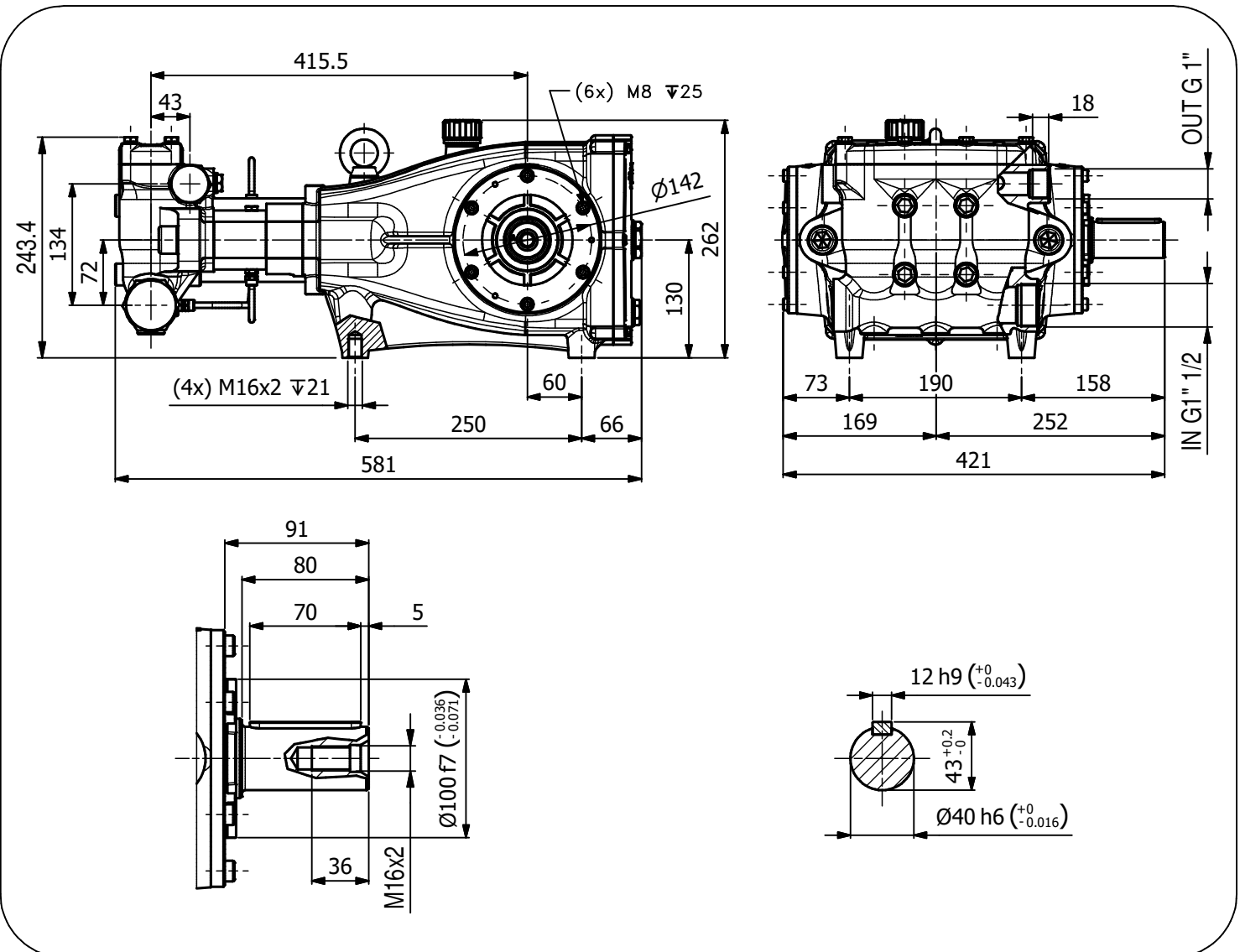


| Pump Pompa | Pressure Pressione | | Volume Portata | | | | RPM giri/min | | Power Potenza | | | |
|---------------|-----------------------|------|-------------------|-------|-------|-------|-----------------|-------|------------------|-------|-------|-------|
| | | | l/min | | GPM | | | | HP | | kW | |
| | bar | PSI | 50 Hz | 60 Hz | 50 Hz | 60 Hz | 50 Hz | 60 Hz | 50 Hz | 60 Hz | 50 Hz | 60 Hz |
| GXT6028S | 280 | 4060 | 60 | 72 | 15,7 | 18,8 | 1000 | 1200 | 43,0 | 51,6 | 31,7 | 38,0 |
| GXT8020S | 200 | 2900 | 80 | 96 | 20,9 | 25,1 | 1000 | 1200 | 41,1 | 49,3 | 30,2 | 36,2 |
| GXT1020S | 200 | 2900 | 100 | 120 | 25,8 | 31 | 1000 | 1200 | 51,3 | 64,6 | 37,7 | 45,4 |
| GXT1215S | 150 | 2175 | 120 | 144 | 31,3 | 37,6 | 1000 | 1200 | 47,0 | 56,4 | 34,6 | 41,5 |
| GXT1515S | 150 | 2175 | 150 | 180 | 39,2 | 47,0 | 1000 | 1200 | 59,0 | 70,8 | 43,4 | 52,1 |
| GXT1712S | 120 | 1740 | 170 | 204 | 45,0 | 54,0 | 1000 | 1200 | 52,4 | 62,9 | 38,6 | 46,3 |

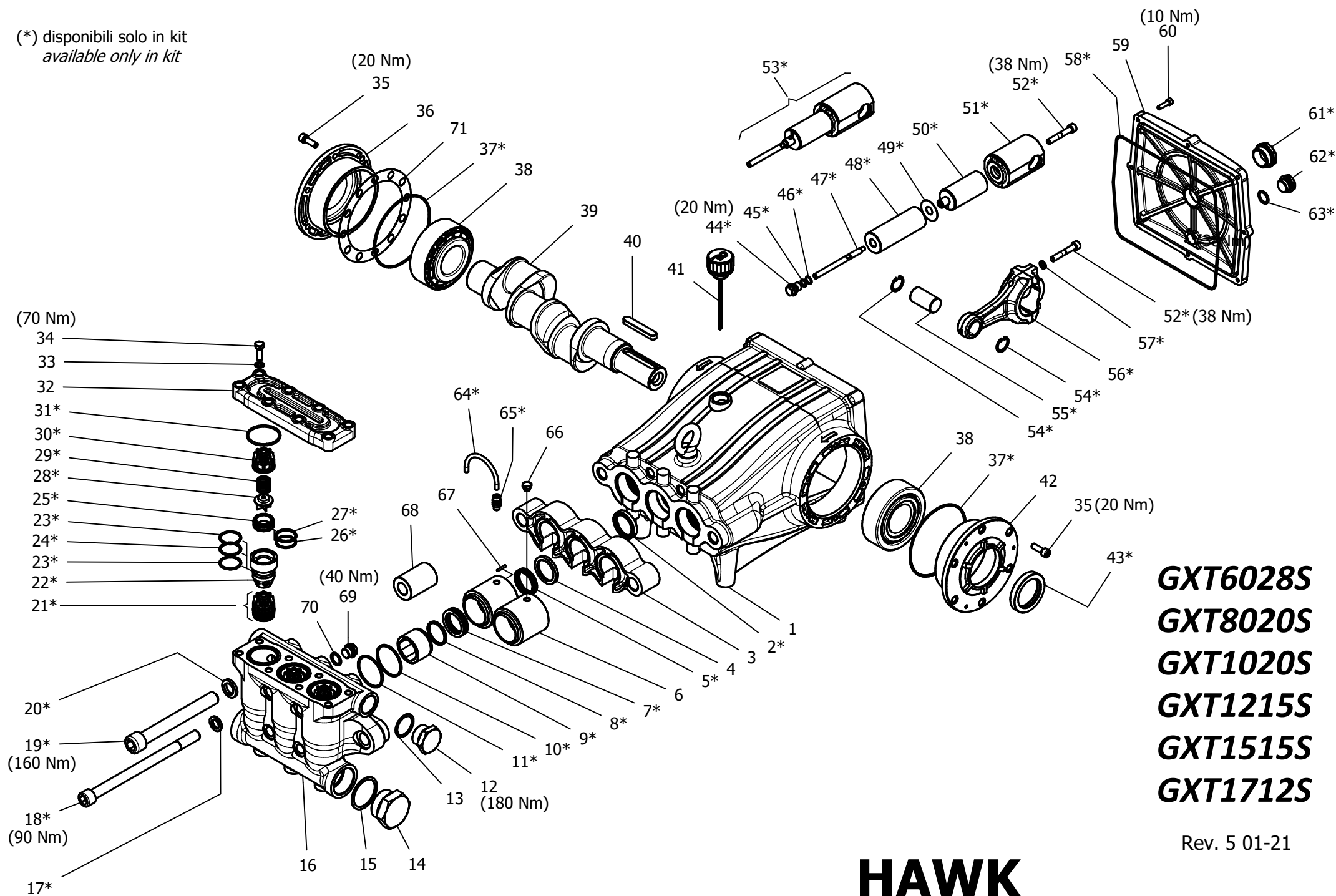


Dimensioni d'ingombro

Overall dimensions



(*) disponibili solo in kit
available only in kit



GXT6028S
GXT8020S
GXT1020S
GXT1215S
GXT1515S
GXT1712S

Rev. 5 01-21

HAWK
serie GXT 2016

GXT SERIES 2016

MAINTENANCE KIT / KIT MANUTENZIONE

| KIT | Item - Pos | Part Number - Codice | Description | Descrizione | Q.TY per pump - Q.TA per pompa | GXT6028S | GXT8020S | GXT1020S | GXT1215S | GXT1515S | GXT1712S |
|-----|--|----------------------|----------------------------|--------------------------|--------------------------------|----------|----------|----------|----------|----------|----------|
| A | 5- 7- 8- 9- 10- 11 | 1.904-476.0 | PISTON SEAL PACKING Ø36 | GUARNIZIONI PISTONE Ø36 | 1 | | | • | • | • | • |
| | | 9.853-464.0 | PISTON SEAL PACKING Ø30 | GUARNIZIONI PISTONE Ø30 | 1 | • | • | | | | |
| B | 44- 45- 46- 48- 49 | 1.904-473.0 | PLUNGER Ø36 | PISTONE Ø36 | 3 | | | • | • | • | • |
| | | 9.853-465.0 | PLUNGER Ø30 | PISTONE Ø30 | 3 | • | • | | | | |
| C | 37- 43- 58- 61 62- 63 | 1.904-474.0 | KIT CRANCKASE SEALS | KIT TENUTE CARTER | 1 | | | | | | |
| D | 17- 18- 19- 20 | 1.904-472.0 | MANIFOLD SCREWS | VITI TESTATA | 1 | | | | | | |
| E | 44- 45- 46- 49 52- 53- 54- 55 56- 57 | 1.904-475.0 | PLUNGER ROD-CONNECTING ROD | ASTA PISTONE-BIELLA | 3 | | | | | | |
| F | 64- 65 | 1.904-477.0 | COMPLETE CIRCULATION PIPES | TUBI RICIRCOLO | 1 | • | • | • | • | • | • |
| G | 21 (25- 26- 27 28- 29- 30) 22 23- 24- 31 | 1.904-470.0 | COMPLETE VALVE | VALVOLE COMPLETE | 1 | | | | | | |
| H | 21 (26-27-28-29- 30-31) 23- 24- 31 | 1.904-471.0 | VALVE | VALVE | 1 | | | | | | |
| I | 2 | 1.904-478.0 | PLUNGER OIL SEALS | TENUTE OLIO ASTA PISTONE | 1 | | | | | | |

“Q.TY per pump” => Necessary quantity to repair one pump
 “Q.TA’ per pompa” => Quantità necessaria per riparare una pompa

IMPORTANT

IMPORTANTE

* Part available ONLY in kit
 Disponibile SOLO in kit

(...) Parts pre-assembled
 Parti pre-assemblate

PARTS LIST LISTA PARTI

| Item Pos | Part Number Codice | Description | Descrizione | Kit | Q.TY Q.TA | GXT6028S | GXT8020S | GXT1020S | GXT1215S | GXT1515S | GXT1712S |
|----------|--------------------|-----------------------|----------------------------|-------|-----------|----------|----------|----------|----------|----------|----------|
| 1 | 9.850-372.0 | CRANCKCASE | CARTER | | 1 | | | | | | |
| 2* | | OIL SEAL | ANELLO RADIALE | I | 3 | • | • | • | • | • | • |
| 3 | 9.850-361.0 | SPACER | DISTANZIALE CARTER | | 1 | | | | | | |
| 4 | 9.851-930.0 | SUPPORT RING Ø36 | PRESSORE Ø36 | | 3 | | | • | • | • | • |
| | 9.853-391.0 | SUPPORT RING Ø30 | PRESSORE Ø30 | | 3 | • | • | | | | |
| 5* | | "U" LP SEAL Ø36 | TENUTA BASSA PRESSIONE Ø36 | A | 3 | | | • | • | • | • |
| | | "U" LP SEAL Ø30 | TENUTA BASSA PRESSIONE Ø30 | A | 3 | • | • | | | | |
| 6 | 9.850-496.0 | INTERMEDIATE RING Ø36 | DIFFUSORE Ø36 | | 3 | | | • | • | • | • |
| | 9.850-495.0 | INTERMEDIATE RING Ø30 | DIFFUSORE Ø30 | | 3 | • | • | | | | |
| 7* | | "U" HP SEAL Ø36 | TENUTA ALTA PRESSIONE Ø36 | A | 3 | | | • | • | • | • |
| | | "U" HP SEAL Ø30 | TENUTA ALTA PRESSIONE Ø30 | A | 3 | • | • | | | | |
| 8* | | SCRAPER Ø36 | RASCHIATORE PISTONE Ø36 | A | 3 | | | • | • | • | • |
| | | SCRAPER Ø30 | RASCHIATORE PISTONE Ø30 | A | 3 | • | • | | | | |
| 9* | | BUSH GUIDE Ø36 | BOCCOLA GUIDA Ø36 | A | 3 | | | • | • | • | • |
| | | BUSH GUIDE Ø30 | BOCCOLA GUIDA Ø30 | A | 3 | • | • | | | | |
| 10* | | BACK RING OR3200 | ANELLO ANTIESTR. OR3200 | A | 3 | | | | | | |
| 11* | | O-RING 3200 – NBR90 | O-RING 3200 – NBR90 | A | 3 | | | | | | |
| 12 | 9.851-331.0 | PLUG G1" | TAPPO G1" | | 1 | | | | | | |
| 13 | 9.850-752.0 | COPPER WASHER G1" | GUARNIZIONE G1" | | 1 | | | | | | |
| 14 | 9.851-360.0 | PLUG G1" 1/2 | TAPPO G1" 1/2 | | 1 | | | | | | |
| 15 | 9.850-753.0 | COPPER WASHER G1" 1/2 | GUARNIZIONE G1" 1/2 | | 1 | | | | | | |
| 16 | 9.851-411.0 | MANIFOLD | TESTATA | | 1 | | | | | | |
| 17* | | WASHER M16 | ROSETTA M16 | D | 4 | | | | | | |
| 18* | | SCREW M16x240 | VITE TCEI M16x240 | D | 4 | | | | | | |
| 19* | | SCREW M20x170 | VITE TCEI M20x170 | D | 2 | | | | | | |
| 20* | | WASHER M20 | ROSETTA M20 | D | 2 | | | | | | |
| 21* | | VALVE ASSEMBLY | PREMONATATO VALVOLA | G - H | 6 | • | • | • | • | • | • |
| 22* | | VALVE SPACER | DISTANZIALE VALVOLA | G | 3 | | | | | | |
| 23* | | BACK RING OR3118 | ANELLO ANTIESTR. OR3118 | G - H | 6 | | | | | | |
| 24* | | O-RING 3118 – NBR90 | O-RING 3118 – NBR90 | G - H | 3 | | | | | | |
| 25* | | VALVE SEAT | SEDE VALVOLA | G - H | 6 | | | | | | |
| 26* | | BACK RING OR3112 | ANELLO ANTIESTR. OR3112 | G - H | 6 | | | | | | |
| 27* | | O-RING 3112 – NBR90 | O-RING 3112 – NBR90 | G - H | 6 | | | | | | |
| 28* | | VALVE PLATE | PIATTELLO VALVOLA | G - H | 6 | | | | | | |
| 29* | | SPRING | MOLLA | G - H | 6 | | | | | | |
| 30* | | VALVE CAGE | GABBIA VALVOLA | G - H | 6 | | | | | | |
| 31* | | O-RING 3193 – NBR90 | O-RING 3193 – NBR90 | G - H | 3 | | | | | | |

| Item Pos | Part Number Codice | Description | Descrizione | Kit | Q.TY Q.TÀ | GXT6028S | GXT8020S | GXT1020S | GXT1215S | GXT1515S | GXT1712S |
|----------|--------------------|--------------------------|--------------------------|-------|-----------|----------|----------|----------|----------|----------|----------|
| 32 | 9.850-396.0 | MANIFOLD COVER | COPERCHIO TESTATA | | 1 | | | | | | |
| 33 | 9.851-140.0 | WASHER M12 | ROSETTA M12 | | 8 | | | | | | |
| 34 | 9.851-518.0 | SCREW M12x40 | VITE TE M12x40 | | 8 | | | | | | |
| 35 | 9.851-468.0 | SCREW M8x25 | VITE TCEI M8x25 | | 12 | • | • | • | • | • | • |
| 36 | 9.850-646.0 | CLOSED HOUSING | FLANGIA CHIUSA | | 1 | | | | | | |
| 37* | | O-RING 3475 – NBR70 | O-RING 3475 – NBR70 | C | 2 | | | | | | |
| 38 | 9.850-353.0 | BEARING | CUSCINETTO | | 2 | | | | | | |
| 39 | 9.851-901.0 | CRANKSHAFT "A" | ALBERO "A" | | 1 | | | | | | • |
| | 9.851-915.0 | CRANKSHAFT "B" | ALBERO "B" | | 1 | | | • | | | |
| | 9.853-098.0 | CRANKSHAFT "C" | ALBERO "C" | | 1 | • | | | | | |
| | 9.853-099.0 | CRANKSHAFT "D" | ALBERO "D" | | 1 | | • | | | | |
| | 9.853-097.0 | CRANKSHAFT "E" | ALBERO "E" | | 1 | | | | • | | |
| | 9.851-879.0 | CRANKSHAFT "F" | ALBERO "F" | | 1 | | | | | • | |
| 40 | 9.850-449.0 | CRANKSHAFT KEY | CHIAVETTA | | 1 | | | | | | |
| 41 | 9.851-284.0 | OIL DIP STICK G3/4 | TAPPO SFIATO OLIO G3/4 | | 1 | | | | | | |
| 42 | 9.850-645.0 | BEARING HOUSING | FLANGIA APERTA | | 1 | | | | | | |
| 43* | | OIL SEAL | ANELLO RADIALE | C | 1 | • | • | • | • | • | • |
| 44* | | PLUNGER NUT | DADO PISTONE | B - E | 3 | | | | | | |
| 45* | | O-RING 2037 – NBR70 | O-RING 2037 – NBR70 | B - E | 3 | | | | | | |
| 46* | | BACK RING OR2037 | ANELLO ANTIESTR. OR2037 | B - E | 3 | | | | | | |
| 47* | | PLUNGER SCREW | TIRANTE PISTONE | E | 3 | | | | | | |
| 48* | | PLUGER Ø36 | PISTONE Ø36 | B | 3 | | | • | • | • | • |
| | | PLUGER Ø30 | PISTONE Ø30 | B | 3 | • | • | | | | |
| 49* | | PLUGER WASHER | ROSETTA PISTONE | B - E | 3 | | | | | | |
| 50* | | PLUNGER ROD SPACER | DISTANZIALE ASTA | E | 3 | | | | | | |
| 51* | | PLUNGER ROD | ASTA PATTINO | E | 3 | | | | | | |
| 52* | | SCREW M8x50 | VITE TCEI M8x50 | E | 9 | | | | | | |
| 53* | | ASSEMBLY PLUNGER ROD | PREMONATATO ASTA PISTONE | E | 3 | | | | | | |
| 54* | | SEEGER | ANELLO SEEGER | E | 6 | | | | | | |
| 55* | | CONNECTING ROD PIN | SPINOTTO | E | 3 | | | | | | |
| 56* | | CONNECTING ROD | BIELLA | E | 3 | | | | | | |
| 57* | | WASHER M8 | ROSETTA ELASTICA M8 | E | 6 | • | • | • | • | • | • |
| 58* | | O-RING Ø2,62x255 - NBR90 | O-RING Ø2,62x255 - NBR90 | C | 1 | | | | | | |
| 59 | 9.850-395.0 | CRANCKCASE COVER | COPERCHIO CARTER | | 1 | | | | | | |
| 60 | 9.851-480.0 | SCREW M6x22 | VITE TCEI M6x22 | | 8 | | | | | | |
| 61* | | SIGHT GLASS G1" | SPIA LIVELLO G1" | C | 1 | | | | | | |
| 62* | | PLUG G1/2 | TAPPO G1/2 | C | 1 | | | | | | |
| 63* | | O-RING 3068 - NBR70 | O-RING 3068 - NBR70 | C | 1 | | | | | | |
| 64* | | RED RILSAN PIPE 6/4 | TUBO RILSAN 6/4 ROSSO | F | 3 | | | | | | |

| Item Pos | Part Number Codice | Description | Descrizione | Kit | Q.TY Q.TÀ | GXT16028S | GXT18020S | GXT1020S | GXT1215S | GXT1515S | GXT1712S |
|----------|--------------------|----------------------|-----------------------|-----|-----------|-----------|-----------|----------|----------|----------|----------|
| 65* | | FITTING G1/8-6/4 | RACCORDO G1/8-6/4 | F | 6 | | | | | | |
| 66 | 9.851-353.0 | PLUG G1/8 | TAPPO G1/8 | | 1 | | | | | | |
| 67 | 9.851-256.0 | PIN | SPINA CILINDRICA | | 3 | | | | | | |
| 68 | 9.853-834.0 | CYLINDER HEAD SPACER | DISTANZIALE TESTATA | | 2 | • | • | • | • | • | • |
| 69 | 9.851-303.0 | PLUG G3/8 | TAPPO G3/8 | | 3 | | | | | | |
| 70 | 9.850-747.0 | COPPER WASHER G3/8 | GUARNIZIONE RAME G3/8 | | 3 | | | | | | |
| 71 | 9.850-549.0 | SHIM | DISTANZIALE FLANGIA | | 1 | | | | | | |

